

*“The essential feature of the prairie is it’s horizon,
which you can neither walk to or touch.”*

- P. GRUCHOW



ARE YOU READY for the Fourth Annual SYMPHONY IN THE FLINT HILLS?

Arrive early to enjoy food, prairie activities, and the beautiful Flint Hills! To prepare you for the Symphony in the Flint Hills adventure, please read these “frequently asked questions.” If you are coming with a group, please share this information with everyone.

I'D LOVE TO EXPLORE MARION COUNTY IN THE MORNING. WHAT DO YOU SUGGEST?

Marion County is ready to welcome you. Please see the Marion County pages in the Weekend Guide that was enclosed in your ticket packet. More information is available at www.marioncountyks.org or call (620) 381.3920.

WHAT TIME DO I NEED TO ARRIVE SO I DON'T MISS THE START OF THE CONCERT AT 6:45PM?

Plan plenty of time to get into the parking lot and then to the ticket gate where you'll exchange your ticket for a wristband. Walking the Wildflower Trail from the ticket gate takes about 30 minutes. The last motorized vehicle will leave the Wait and Ride

Tent at 6:15pm. The best bet is to arrive several hours early. You'll find lots of activities, food, beverages, and shade available at the concert site before the concert. Check out the Activities Schedule in the Weekend Guide that arrived with your tickets. The concert will start at 6:45pm – sharp!

WHERE DO I PARK FOR THE SYMPHONY?

Check out the map. Watch for the signs. General Admission Parking is located in the North Turkey Springs Pasture. Parking attendants will direct you. For those who need assistance, golf cart rides will be available from a center aisle in the parking lot

(Continued next page)

to near the Ticket Gate. Symphony Patron and Sponsor Parking is located somewhat closer to the Ticket Gate. Parking attendants will direct you.

WILL THERE BE ADA EQUIPPED TRANSPORTATION TO THE CONCERT SITE FOR PERSONS WITH DISABILITIES?

Yes, there will be ADA equipped vans from the ADA parking area. Please call 620-273-8955 to let us know your plans. Display your ADA Parking Tag.

WHAT'S THE BEST WAY TO GET FROM THE TICKET GATE TO THE CONCERT SITE?

Rides will be available by wagons from the Wait and Ride Tent just beyond the ticket gate to the concert site. It is hard to predict how long lines will be. We encourage everyone to take the no-wait alternative ~ a beautiful ¾ mile or so walk on the "Wildflower Trail". The trail has a few hills but the views are spectacular and the June flowers will be in full bloom. There are straw bales along the way to sit, rest and enjoy the view.

LIMITED EDITION FINE ART PRINT

For the past two years, Symphony in the Flint Hills has invited selected artists, who paint in the Flint Hills, to submit original artwork for a Silent Art Auction. One painting has been selected each year to be reproduced as a commemorative poster. This year is the beginning of a Fine Art Print series. Juror Kate Meyer of the Spencer Museum of Art at the University of Kansas, selected Cally Krallman's painting for the 2009 limited edition print. Prints may be ordered at the Prairie Art and Gift Tent and will be numbered, signed and shipped to the purchaser. The Silent Auction will feature the thirteen artists who submitted work and will be held in the the Prairie Art and Gift Tent, beginning at 1:00 p.m. and concluding at the end of the intermission.

HOW EARLY MAY I COME?

Parking open all day. The ticket gate opens at 1:00pm. Rides to the site on the wagons will begin and the Wildflower Walking Trail opens.

I'M PLANNING TO ARRIVE EARLY IN THE AFTERNOON. WHAT ACTIVITIES ARE AVAILABLE AT THE CONCERT SITE?

An array of interesting and fun options is included in the price of your ticket. See the Schedule of Activities included in the Weekend Guide or go to www.symphonyintheflinthills.org.



UMB is honored to return as the Major Presenting Sponsor for the Symphony of the Flint Hills.

UMB is proud to have a long tradition of supporting the arts and agriculture. This commitment includes ongoing partnerships with leading regional arts organizations like the Kansas City Symphony and local organizations and schools to cultivate the artistic talent of our youth. We also support a variety of programs that showcase the important impact of ranching and farming.

The Symphony in the Flint Hills uniquely pairs arts and agriculture, creating a harmonious balance not only for UMB's philanthropic focus areas, but for the communities who revere this unique event.

umb.com
MEMBER FDIC

UMB
Count on more.®

WHAT SHOULD I WEAR?

This is a non-traditional symphony concert. Wear shoes ready for walking (no sandals or open-toed shoes) and dress for hot summer weather – not your traditional "symphony-going" attire.

ANNOUNCING A NEW FIELD JOURNAL

A New Field Journal will be offered including a collection of articles and illustrations about the Flint Hills and the area surrounding this year's site. The design gives you space for you to write your reflections and observations. The goal is to use the Field Journal both to commemorate the event and to heighten awareness of the experience. Simple pencils will be provided but bring colored pencils or pens or watercolors for sketching and note taking. The Field Journal will be hard-bound, over 130 pages of recycled material, and will be available for purchase.

DO I NEED TO BRING MY OWN CHAIR?

Chairs are available for rent for a reasonable \$2 vendor token – much easier than carrying your chair over hill and dale. You may bring chairs (no chaise lounges, please) or blankets if you wish.

WHAT ELSE DO I NEED TO REMEMBER FOR THIS PRAIRIE ADVENTURE?

Don't forget a hat, sunscreen and bug spray! After the concert, the walking trail will be lit, but you may wish to bring a flashlight for the walk back to the car.

WILL THERE BE FOOD AND DRINKS AVAILABLE? DO I NEED TO BRING A PICNIC?

Award-winning barbecue dinners with a vegetarian option will be available for purchase at the concert site. Iced tea, lemonade, cold water, wine, and beer will also be available. **Beginning this year, do not bring outside alcoholic beverages to the site. This year all bags and coolers will be inspected before you enter through the Ticket Gate because of Kansas Alcohol Beverage Control regulations.** You may choose to bring your own picnic, but remember you will need to carry it with you. Due to limited space, hard-sided coolers are not allowed on any of the transport vehicles. Please don't bring any glass containers. Thanks

IS THE FOOD EXPENSIVE?

Prices range from \$2 for a beverage to \$8 for a Barbecue Dinner. You will purchase vendor tokens at the concert site for \$2 each. Tokens may be exchanged for food and beverages with menu item prices to match.

WILL THERE BE WATER AVAILABLE ?

Yes. Free water will be available and dispensed next to the Emergency Medical Tents in the parking lot and at the concert site. Chilled bottled water will also be available for purchase with tokens.

WHAT KINDS OF WINE AND BEER ARE AVAILABLE FOR SALE?

Chardonnay, Cabernet, Boulevard Beer on tap.

IMPORTANT NOTICE

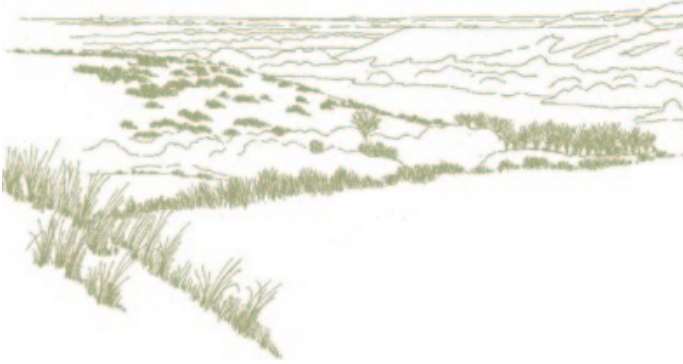
Beginning this year, do not bring outside alcoholic beverages to the site. All bags and coolers will be inspected before you may enter through the Ticket Gate because of Kansas Alcohol Beverage Control regulations

WHAT SOUVENIRS WILL BE FOR SALE AT THE CONCERT?

There will be an array of T-shirts, hats, Prairie-related books and other interesting items for sale at the Prairie Art and Gift Tent.

HOW LONG IS THE CONCERT?

The concert will start promptly at 6:45pm. The performance will last 90 minutes plus a 20-minute intermission. Sunset in the Flint Hills can be extraordinarily beautiful. Sunset on June 13 will be at 8:55pm.



BRING THE SUN AND STARS IN CLOSE. VISIT THE HILLSIDE OBSERVATORY!

Discovering this Place includes looking up... at the heavens. Star gazing begins as soon as the sky is dark enough to see twinkling. Moonrise isn't until the wee small hours of the morning so the moonless sky will be perfect for sightseeing (the moonlight won't overpower the starlight). Astronomers from the Kansas Astronomical Observers and the Salina Astronomy Club will provide over ten telescopes and will be on hand to show you around the celestial neighborhood. Plans are in the works to present "Native Americans View of the Night Sky". All afternoon solar telescopes for viewing the sun will be available, as well as a series of astronomical presentations.

ARE THERE ANY RULES I SHOULD BE AWARE OF?

No videotaping, photographing, cell phones, or electronic devices during the performance, please! Hard sided coolers are not allowed on wagons or in the vans. Don't bring any alcohol. No glass containers on the site. Smoking in designated area only.

SORRY, NO PETS ALLOWED.

WHO GETS THE PROCEEDS FROM SYMPHONY TICKET SALES?

Symphony in the Flint Hills, Inc. is a Kansas nonprofit organization. Any proceeds after expenses for the 2009 concert will be carried forward for the Fifth Anniversary concert in 2010.

IT'S NOT GOING TO RAIN ON JUNE 13TH IS IT?

It is expected that Saturday, June 13, 2009, will be the most glorious day of the year! However, remember that nature is our partner in this event. If the weather seems uncertain on that day, please call the Kansas City Symphony box office at 816-471-0400 for information. For updates, check KAKE-TV in Wichita (Channel 22), WIBW-Channel 13 in Topeka, KMUW (FM 89) in Wichita, KPR (FM 91.5) in Lawrence and KCUR (FM 89.3) in Kansas City.

IS THERE A RAIN DATE SCHEDULED?

In case of inclement weather on June 13, the concert will be held at 6:45pm on Sunday, June 14, 2009.

IN CASE OF RAIN ON BOTH DAYS, ARE TICKETS REFUNDABLE?

No ticket refunds, no ticket exchanges. In case of event cancellation, your ticket may be used as a tax-deductible contribution.

IN CASE OF INCLEMENT WEATHER

If bad weather threatens, we will make every effort to go on with the event as planned, however, everyone's safety must be the first concern for all of us. If weather looks threatening before the event, go to the website for last minute updates and instructions: www.symphonyintheflinthills.org. If the concert has to be interrupted because of sudden changes in the weather, please follow the directions of the Master of Ceremonies, help your neighbor, and move to the low ground behind the Symphony stage. DO NOT seek shelter in the tents or try to get back to your automobile. Low ground is the safest place to be. We can resume the Symphony after the weather threat has passed. If we can't continue, save your wristband, it will be your entry ticket for the rain-date concert.

OH, AND ONE MORE QUESTION. WHERE CAN I GO FOR MORE INFORMATION?

Visit www.symphonyintheflinthills.org, e-mail: info@symphonyintheflinthills.org or call 620-273-8955.

A NOTE FROM THE CHAIR



The Flint Hills are preparing for your arrival... the grasses are growing strong and tall, the cowboys will be waiting on their horses, and the musicians, artists, and presenters will be in place to ensure a most remarkable day in the tallgrass prairie.

As we began planning for this year's concert, our board revisited our mission statement and articulated our core values, resulting in, among other things, a commitment to place-based education and environmental responsibility. We thought it important to refine our visual identity to reflect our core values, and as a result, there are some wonderful new things to look for this year!

We've added the new "Prairie as Muse" tent, dedicated to writers, poets and artists who derive their inspiration from the landscape. We're selling a signed, limited edition print of the "winning" painting by Cally Krallman (that replaces the Commemorative Poster). And we are offering a beautiful "Field Journal" that is sure to become a tangible memory of a transforming day. We hope that you will embrace it, make notations in it, and use it as a place for your thoughts, drawings, and photographs of your day on the prairie (replaces the former Commemorative Program).

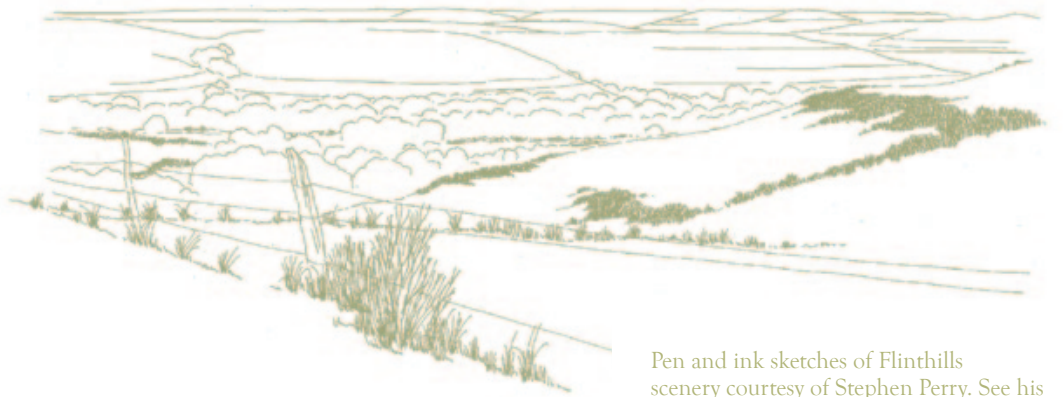
A commitment to environmental sustainability underlies all our efforts. First steps toward this goal include: most new communication materials are printed on recycled or recyclable paper; new products in the Prairie Art and Gift Tent reflect a respect for environmental responsibility; and increased efforts in recycling trash at the event. We invite you to be aware of ways you can help.

We hope these things will enhance your experience as you "Discover this Place," and we extend a most sincere "thank you" to all the Patrons, Sponsors, Volunteers, and attendees who make this possible. We are anxious to welcome you once again to the beautiful Flint Hills of Kansas!

Warmest regards,

Patty Reece

Patty Reece
Board Chair
Symphony in the Flint Hills



Pen and ink sketches of Flinthills scenery courtesy of Stephen Perry. See his website @ www.backroadstraveler.com

TAKE YOUR TIME

Exiting the parking lot could take a long time. We invite you to stay awhile and enjoy the entertainment that will continue after the symphonic concert. Plans include: old time acoustic music with fiddles, banjos, guitars, harmonicas and a good wooden (expanded) dance floor. A group of Kansas astronomers will be on site at the Hillside Observatory with their telescopes for people who want to star gaze. A Story Circle will feature a Native American and a Cowboy telling tales and playing music. Food and beverages will be served until late so you can relax and enjoy a lovely evening out on the prairie.

SYMPHONY IN THE
FLINT  HILLS

Spring 2009
ISSUE 8

PRSR STD
U.S. POSTAGE
PAID
Strong City, KS
66869
Permit No. 10

IMPORTANT TICKET HOLDER INFORMATION

2009 CONCERT LOCATION

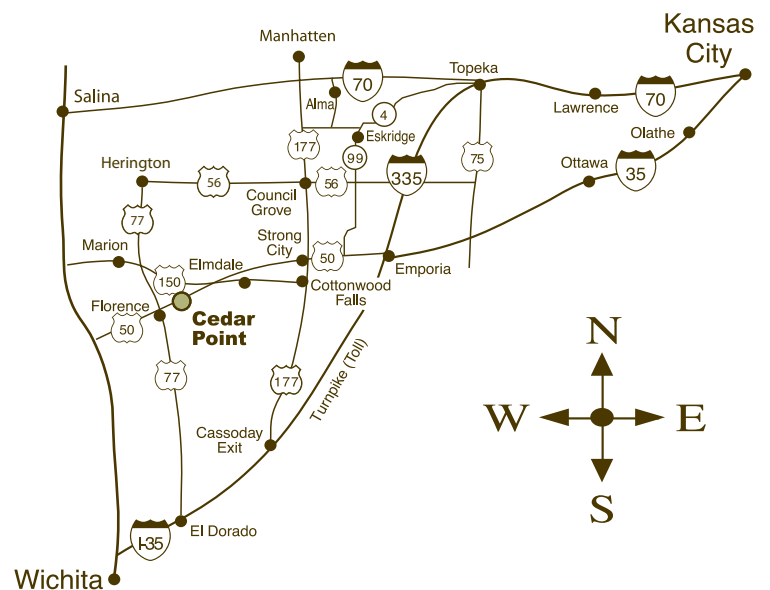
Doyle Creek Land & Cattle Company

Located between Florence and Strong City,
South of Cedar Point.

The site for the 4th Annual Concert is in
Chase County on privately owned ranchland
approximately three miles southeast of
Cedar Point

DISTANCE TO CEDAR POINT FROM:

- Topeka - 96 miles (Southwest)
- Manhattan - 77 miles (Southwest)
- Emporia - 39 miles (West)
- Wichita - 61 miles (Northeast)
- Kansas City - 149 miles (Southwest)
- Lawrence - 115 miles (Southwest)




KANSAS
ARTS COMMISSION

For a more detailed map, please visit maps.Google.com and search for Cedar Point, Kansas.
For more general information please visit us at www.symphonyintheflinthills.org